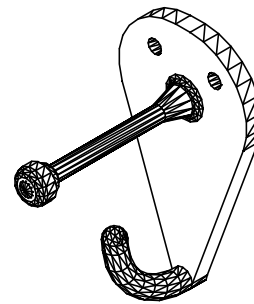
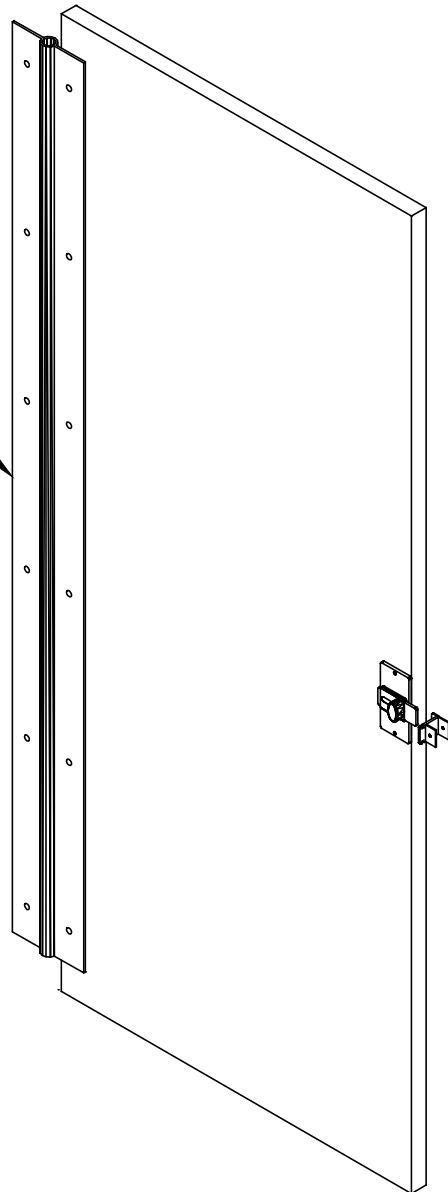
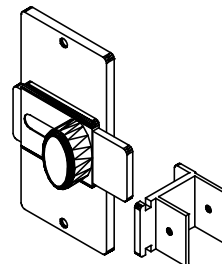


PHENOLIC  
CONTINUOUS HINGE  
COMPARTMENT DOOR DETAIL  
6.16F

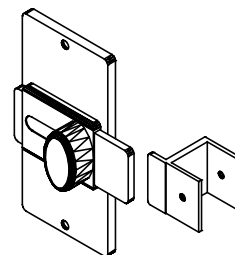
54" CONTINUOUS HINGE  
CENTERED ON DOOR



COMBINATION  
COAT HOOK / DOOR  
STOP



SLIDE LATCH  
WITH LOCK  
(INSWING)



SLIDE LATCH  
WITH LOCK  
(OUTSWING)

REV 5/13