

MOISTURE GUARD™ PLASTIC LAMINATE

# MOISTURE GUARD™

## WE'VE REIMAGINED PLASTIC LAMINATE

**48** | **48**  
**COLORS** | **HOURS** \*



Moisture Guard™ Edge Banding: Available on all partition doors, panels, pilasters and urinal screens in 48 colors.

ASI Group's Moisture Guard™ offers durability plus a variety of aesthetic options, allowing you to specify and use Plastic Laminate anywhere you could imagine.

ASI Group's proprietary manufacturing process fuses Moisture Guard™ Edge Banding with the internal substrate, creating a seamless beveled profile that eliminates any unsightly black lines that appear in standard Plastic Laminate. And it's backed by an industry leading, exclusive, five-year warranty.

ASTM tests on Moisture Guard™ Edge Banding confirms 3X greater durability with increased resistance to moisture and humidity than standard Plastic Laminate.

**NEW colors shipped in 48 hours.** We have refreshed our selection of Moisture Guard™ colors and patterns to offer an updated palette for you to create your designs. **AND** we will still ship you these **48 colors in 48 hours\*** from the time you approve your order.

As an added bonus we will save installers even more time with our **Easy Stall Shoe\*\***, which speeds up the installation process.

\*48 colors in 48 hours are only available in Floor Anchored/Overhead Braced.

\*\*Easy Stall Shoe in Floor Anchored/Overhead Braced only.



Moisture Guard™  
Plastic Laminate

Standard  
Plastic Laminate

**ASI**®  
Global  
Partitions



**\*\*Wheat Strand 9110**



Casual Linen 4538



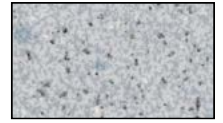
Crisp Linen 1150



**\*\*Asian Night 9550**



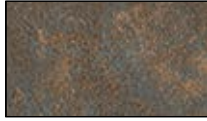
**\*\*Windswept Pewter 3849**



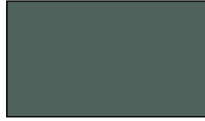
Folkstone Celesta 3300



Dove Gray 3010



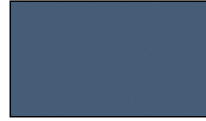
Patine Bronze 4707



Spruce Mist 5516



**\*\*Phantom Charcoal 9214**



Brittany Blue 7010



**\*\*Kingswood Walnut 9218**



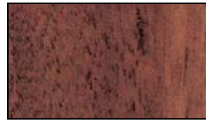
**\*\*Hampton Walnut 9759**



Graphite Graphix 3020



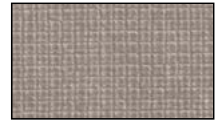
Carrara Bianco 1096



**\*\*Mahogany 9939**



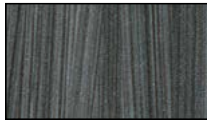
**\*\*Aged Ash 9844**



**\*\*Pewter Mesh 5993**



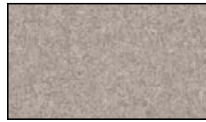
Silver Gray 3000



**\*\*Burnt Strand 5107**



Sand 4010



Canyon Zephyr 3713



**\*\*Natural Recon 9796**



**\*\*Handspun Chestnut 4036**



Algae 5796



Storm Solidz 3542



**\*\*Smoky Brown Pear 9488**



Smoke 8450



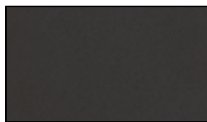
Black 2000



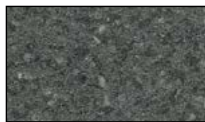
**\*\*Field Elm 9799**



**\*\*Handspun Pearl 3033**



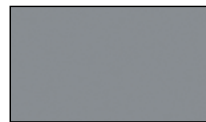
Graphite 2150



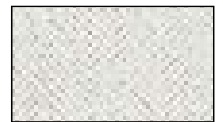
Smoke Quarstone 3350



**\*\*Millennium Oak 9887**



Fog 3450



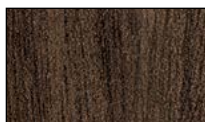
**\*\*Cotton Cloth 1681**



**\*\*Weathered Ash 9842**



**\*\*Satin Stainless 5030**



**\*\*Antique Mango 9783**



Navy Grafix 7318



**\*\*White Ash 1841**



Jadeite 5198



**\*\*Neo Walnut 7954**



**\*\*Danish Maple 9906**



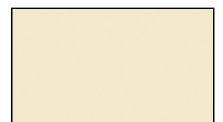
Taupe 9096



Mission White 1010



**\*\*Handspun Slate 3035**



Almond 4000

*Actual colors may vary slightly from those shown due to limitations in the printing process.*

*\*Should you require different colors we will provide partitions in the Standard Plastic Laminate construction with the 2-year warranty.*

*\*\*Directional Pattern – Pattern on panels over 60" wide will run perpendicular to pattern on doors and pilasters. Patterns shown are cropped from the full size sheet, contact us for additional references.*

**ASI Global Partitions**

900 Clary Connector  
 Eastanollee, GA 30538

Tel: 706.827.2700 Fax: 706.827.2710

Email: sales@asi-globalpartitions.com

Web: asi-globalpartitions.com