

PART-1 GENERAL

1.01 DESCRIPTION

- A. Phenolic compartment work includes the following:
 - 1. Floor and Ceiling Anchored partitions.
- B. Furnish all labor and materials necessary for the completion of work in this section as shown on the contract drawings and specified herein.
- C. Work in this section shall include but is not limited to:
 - 1. Toilet compartments
 - 2. Hardware for toilet compartments
 - 3. Shop drawings and working drawings
 - 4. Manufacturer's guarantee
- D. Related work specified elsewhere shall include accessories and anchorage/blocking for attachment of compartments.

1.02 PRODUCTS

- A. Submittal of shop drawings and details, for architect's approval.
- B. Colors shall be selected from the manufacturer's standard range of colors.
- C. Color and hardware samples shall be submitted for approval to the architect upon request.

PART-2 PRODUCTS

2.01 MANUFACTURER

- A. Toilet compartments to be supplied by ASI Global Partitions, Eastanollee, Georgia, 30538.

2.02 MATERIALS

- A. Doors shall be constructed of 3/4" solid phenolic core decorative plastic laminate with multiple resin-impregnated kraft and surface sheets fused at high temperature and pressure.
- B. Panels shall be constructed of 1/2" solid phenolic core decorative plastic laminate with multiple resin-impregnated kraft and surface sheets fused at high temperature and pressure.
- C. Pilasters shall be constructed of 3/4" solid phenolic core decorative plastic laminate with multiple resin-impregnated kraft and surface sheets fused at high temperature and pressure.

2.03 CONSTRUCTION

- A. Doors shall be constructed of 3/4" solid phenolic core decorative plastic laminate with multiple resin-impregnated kraft and surface sheets fused at high temperature and pressure; the edges being finished and polished.
- B. Panels shall be constructed of 1/2" solid phenolic core decorative plastic laminate with multiple resin-impregnated kraft and surface sheets fused at high temperature and pressure; the edges being finished and polished.
- C. Pilasters shall be constructed of 3/4" solid phenolic core decorative plastic laminate with multiple resin-impregnated kraft and surface sheets fused at high temperature and pressure; the edges being finished and polished. Pilasters shall include a mounting system comprising a 1/4" x 3/4" stainless steel bar attached to the pilaster having 3/8" zinc plated steel bolts secured to nuts imbedded within a contoured aperture transversely piercing the core at least 1" above the mounting end. Each mounting bar shall be secured to the building structure with 3/8" zinc plated steel studs.

2.04 HARDWARE (NOTE: Refer to the ORDER INFORMATION CONTRACT for specific hardware to be supplied on your order.)

- A. All exposed door hardware shall be as noted:
 - 1. Heavy-duty diecast (vault) zamac hinge shall have gravity-acting cams and are fabricated from a die cast aluminum alloy with a brushed finish and wrap around flanges. The cam is constructed from a 3/4" diameter nylon rod and a 3/8" stainless steel pin. Slide latch, strike/keeper and hinges are through-bolted onto doors and pilasters using stainless steel vandal-resistant through bolts. Hinges are easily adjusted at the jobsite to a full close or partially open position, as required. Keeper provides for emergency access into the stall by lifting up on the bottom of the door.
 - 2. Optional: Continuous stainless steel hinge. Slide latch, strike/keeper and hinges are through bolted onto doors and pilasters using stainless steel, vandal-resistant through bolts.
- B. Panel and pilaster brackets shall be as noted:
 - 1. Stainless steel stirrup brackets shall be 2" long. Stirrup brackets shall be 1/8" thick and mounted with stainless steel, vandal-resistant screws. Panels shall be attached with stainless steel, vandal-resistant through bolts. The attachment of brackets to the adjacent wall construction shall be accomplished with 2 1/2" stainless steel vandal-resistant screws and plastic anchors.
 - 2. Optional: Continuous heavy duty anodized extruded aluminum (6063-T5 alloy) wall brackets are pre-drilled. Wall brackets are mounted with stainless steel, vandal-resistant screws. The attachment of brackets to the adjacent wall construction shall be accomplished with 2 1/2" stainless steel vandal resistant screws and plastic anchors.
 - 3. Optional: Continuous heavy duty stainless steel wall brackets are pre-drilled. Wall brackets are mounted with stainless steel, vandal-resistant screws. The attachment of brackets to the adjacent wall construction shall be accomplished with 2 1/2" stainless steel vandal resistant screws and plastic anchors.
- C. Pilaster shoes shall be of type 304 steel #4 finish.

PART-3 EXECUTION

3.01 PREPARATION

- A. Examine areas to receive toilet compartments for correct height and spacing of anchorage/blocking and plumbing fixtures that may affect installation of compartments. Report any discrepancies to the architect.
- B. Take complete and accurate measurements of toilet compartment locations.
- C. Start of work constitutes acceptance of job.

3.02 INSTALLATION

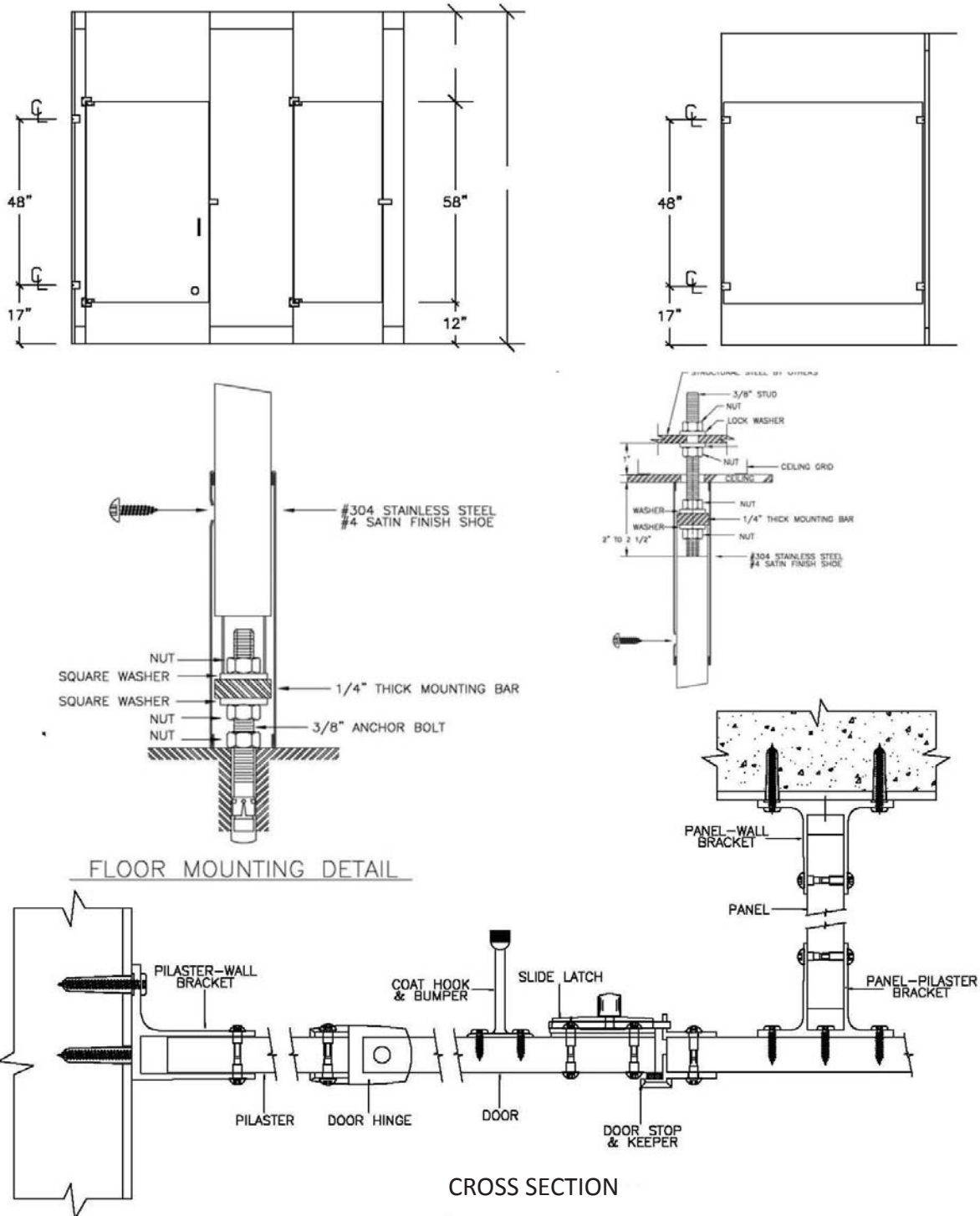
- A. Install compartments in a rigid, straight, plumb and level manner as shown on the shop drawings and manufacturer's installation instructions.
- B. All doors and panels to be mounted at 12" above the finished floor.
- C. Clearance at vertical edges of door shall be uniform top to bottom.
- D. No evidence of cutting, drilling and/or patching shall be visible on the finished work.
- E. Finished surfaces shall be cleaned after installation and be left free of all imperfections.

FLOOR AND CEILING ANCHORED

Date Issued 10-19

3.03 WARRANTY

- A. ASI Global Partitions guarantees its black core phenolic units, properly maintained, against delamination, breakage or corrosion for 25 years from the date of receipt by the customer. If materials are found defective during that period for the reasons listed above, the material will be replaced free of charge. No credits or allowances will be issued for any labor or expenses relating to the replacement of components covered under the warranty plan. All such expenses are to be borne by the buyer.



PART-1 GENERAL

1.01 DESCRIPTION

- A. Phenolic compartment work includes the following:
 - 1. Ceiling Hung partitions.
- B. Furnish all labor and materials necessary for the completion of work in this section as shown on the contract drawings and specified herein.
- C. Work in this section shall include but is not limited to:
 - 1. Toilet compartments
 - 2. Hardware for toilet compartments
 - 3. Shop drawings and working drawings
 - 4. Manufacturer's guarantee
- D. Related work specified elsewhere shall include accessories and anchorage/blocking for attachment of compartments.

1.02 PRODUCTS

- A. Submittal of shop drawings and details, for architect's approval.
- B. Colors shall be selected from the manufacturer's standard range of colors.
- C. Color and hardware samples shall be submitted for approval to the architect upon request.

PART-2 PRODUCTS

2.01 MANUFACTURER

- A. Toilet compartments to be supplied by ASI Global Partitions, Eastanollee, Georgia, 30538.

2.02 MATERIALS

- A. Doors shall be constructed of 3/4" solid phenolic core decorative plastic laminate with multiple resin-impregnated kraft and surface sheets fused at high temperature and pressure.
- B. Panels shall be constructed of 1/2" solid phenolic core decorative plastic laminate with multiple resin-impregnated kraft and surface sheets fused at high temperature and pressure.
- C. Pilasters shall be constructed of 3/4" solid phenolic core decorative plastic laminate with multiple resin-impregnated kraft and surface sheets fused at high temperature and pressure.

2.03 CONSTRUCTION

- A. Doors shall be constructed of 3/4" solid phenolic core decorative plastic laminate with multiple resin-impregnated kraft and surface sheets fused at high temperature and pressure; the edges being finished and polished.
- B. Panels shall be constructed of 1/2" solid phenolic core decorative plastic laminate with multiple resin-impregnated kraft and surface sheets fused at high temperature and pressure; the edges being finished and polished.
- C. Pilasters shall be constructed of 3/4" solid phenolic core decorative plastic laminate with multiple resin-impregnated kraft and surface sheets fused at high temperature and pressure; the edges being finished and polished. Pilasters shall include a mounting system comprising a 3/8" x 3/4" stainless steel bar attached to the pilaster having 3/8" zinc plated steel bolts secured to nuts imbedded within a contoured aperture transversely piercing the core at least 1" above the mounting end. Each mounting bar shall be secured to the building structure with 3/8" zinc plated steel studs.

2.04 HARDWARE (NOTE: Refer to the ORDER INFORMATION CONTRACT for specific hardware to be supplied on your order.)

- A. All exposed door hardware shall be as noted:
 - 1. Heavy-duty diecast (vault) zamac hinge shall have gravity-acting cams and are fabricated from a die cast aluminum alloy with a brushed finish and wrap around flanges. The cam is constructed from a 3/4" diameter nylon rod and a 3/8" stainless steel pin. Slide latch, strike/keeper and hinges are through-bolted onto doors and pilasters using stainless steel vandal-resistant through bolts. Hinges are easily adjusted at the jobsite to a full close or partially open position, as required. Keeper provides for emergency access into the stall by lifting up on the bottom of the door.
 - 2. Optional: Continuous stainless steel hinge. Slide latch, strike/keeper and hinges are through bolted onto doors and pilasters using stainless steel, vandal-resistant through bolts.
- B. Panel and pilaster brackets shall be as noted:
 - 1. Stainless steel stirrup brackets shall be 2" long. Stirrup brackets shall be 1/8" thick and mounted with stainless steel, vandal-resistant screws. Panels shall be attached with stainless steel, vandal-resistant through bolts. The attachment of brackets to the adjacent wall construction shall be accomplished with 2 1/2" stainless steel vandal-resistant screws and plastic anchors.
 - 2. Optional: Continuous heavy duty anodized extruded aluminum (6063-T5 alloy) wall brackets are pre-drilled. Wall brackets are mounted with stainless steel, vandal-resistant screws. The attachment of brackets to the adjacent wall construction shall be accomplished with 2 1/2" stainless steel vandal resistant screws and plastic anchors.
 - 3. Optional: Continuous heavy duty stainless steel wall brackets are pre-drilled. Wall brackets are mounted with stainless steel, vandal-resistant screws. The attachment of brackets to the adjacent wall construction shall be accomplished with 2 1/2" stainless steel vandal resistant screws and plastic anchors.
- C. Pilaster shoes shall be of type 304 steel #4 finish.

PART-3 EXECUTION

3.01 PREPARATION

- A. Examine areas to receive toilet compartments for correct height and spacing of anchorage/blocking and plumbing fixtures that may affect installation of compartments. Report any discrepancies to the architect.
- B. Take complete and accurate measurements of toilet compartment locations.
- C. Start of work constitutes acceptance of job.

3.02 INSTALLATION

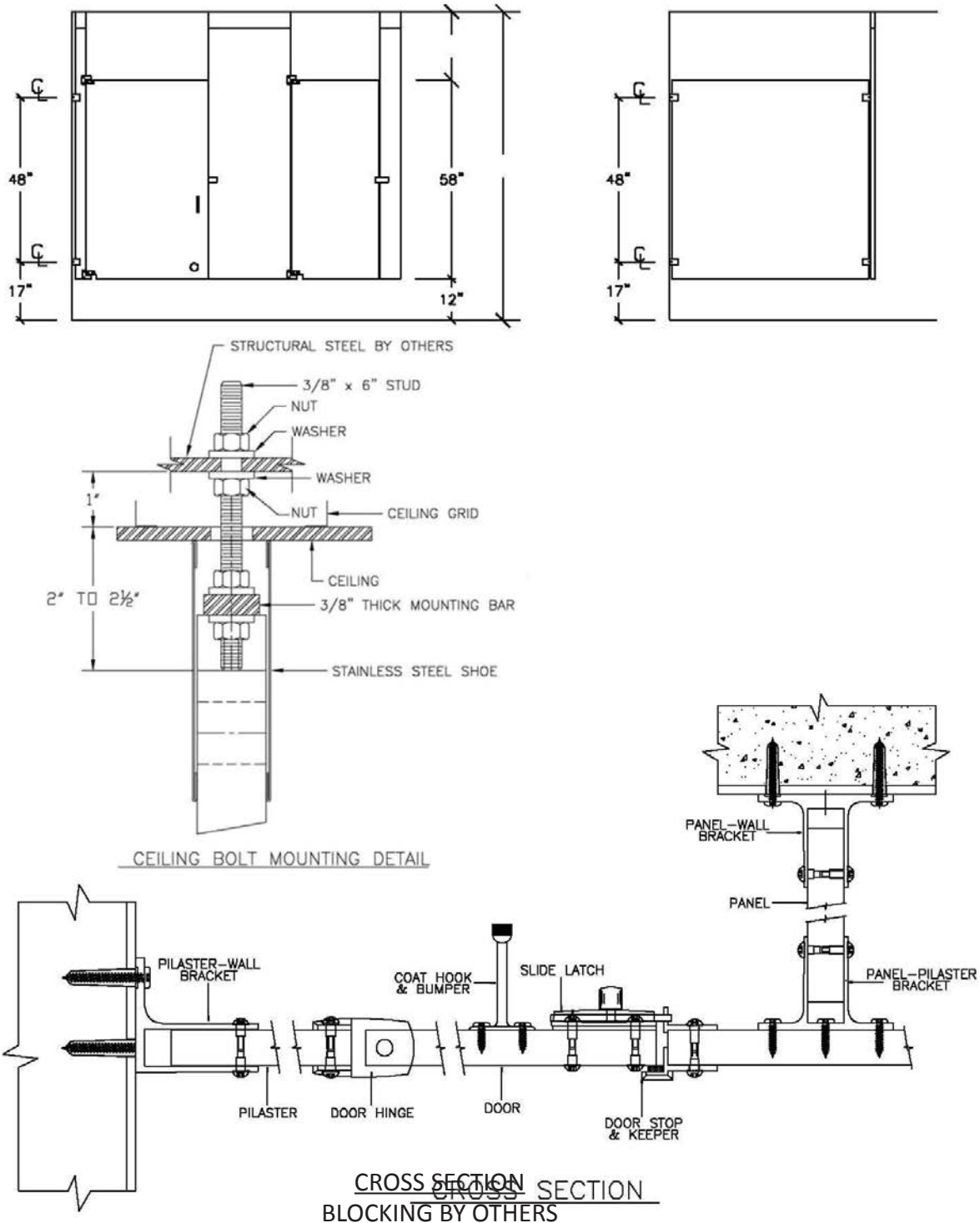
- A. Install compartments in a rigid, straight, plumb and level manner as shown on the shop drawings and manufacturer's installation instructions.
- B. All doors and panels to be mounted at 12" above the finished floor.
- C. Clearance at vertical edges of door shall be uniform top to bottom.
- D. No evidence of cutting, drilling and/or patching shall be visible on the finished work.
- E. Finished surfaces shall be cleaned after installation and be left free of all imperfections.

CEILING ANCHORED

Date Issued 10-19

3.03 WARRANTY

- A. ASI Global Partitions guarantees its black core phenolic units, properly maintained, against delamination, breakage or corrosion for 25 years from the date of receipt by the customer. If materials are found defective during that period for the reasons listed above, the material will be replaced free of charge. No credits or allowances will be issued for any labor or expenses relating to the replacement of components covered under the warranty plan. All such expenses are to be borne by the buyer.



PART-1 GENERAL**1.01 DESCRIPTION**

- A. Phenolic compartment work includes the following:
 - 1. Floor anchored partitions.
- B. Furnish all labor and materials necessary for the completion of work in this section as shown on the contract drawings and specified herein.
- C. Work in this section shall include but is not limited to:
 - 1. Toilet compartments
 - 2. Hardware for toilet compartments
 - 3. Shop drawings and working drawings
 - 4. Manufacturer's guarantee
- D. Related work specified elsewhere shall include accessories and anchorage/blocking for attachment of compartments.

FLOOR ANCHORED

Date Issued 10-19

1.02 PRODUCTS

- A. Submittal of shop drawings and details, for architect's approval.
- B. Colors shall be selected from the manufacturer's standard range of colors.
- C. Color and hardware samples shall be submitted for approval to the architect upon request.

PART-2 PRODUCTS**2.01 MANUFACTURER**

- A. Toilet compartments to be supplied by ASI Global Partitions, Eastanollee, Georgia, 30538.

2.02 MATERIALS

- A. Doors shall be constructed of $\frac{3}{4}$ " solid phenolic core decorative plastic laminate with multiple resin-impregnated kraft and surface sheets fused at high temperature and pressure.
- B. Panels shall be constructed of $\frac{1}{2}$ " solid phenolic core decorative plastic laminate with multiple resin-impregnated kraft and surface sheets fused at high temperature and pressure.
- C. Pilasters shall be constructed of $\frac{3}{4}$ " solid phenolic core decorative plastic laminate with multiple resin-impregnated kraft and surface sheets fused at high temperature and pressure.

2.03 CONSTRUCTION

- A. Doors shall be constructed of $\frac{3}{4}$ " solid phenolic core decorative plastic laminate with multiple resin-impregnated kraft and surface sheets fused at high temperature and pressure; the edges being finished and polished.
- B. Panels shall be constructed of $\frac{1}{2}$ " solid phenolic core decorative plastic laminate with multiple resin-impregnated kraft and surface sheets fused at high temperature and pressure; the edges being finished and polished.
- C. Pilasters shall be constructed of $\frac{3}{4}$ " solid phenolic core decorative plastic laminate with multiple resin-impregnated kraft and surface sheets fused at high temperature and pressure; the edges being finished and polished. Pilasters shall include a mounting system comprising a $\frac{3}{8}$ " x $\frac{3}{4}$ " stainless steel bar attached to the pilaster having $\frac{3}{8}$ " zinc plated steel bolts secured to nuts imbedded within a contoured aperture transversely piercing the core at least 1" above the mounting end. Each mounting bar shall be secured to the building structure with $\frac{3}{8}$ " zinc plated steel studs.

2.04 HARDWARE (NOTE: Refer to the ORDER INFORMATION CONTRACT for specific hardware to be supplied on your order.)

- A. All exposed door hardware shall be as noted:
 - 1. Heavy-duty diecast (vault) zamac hinge shall have gravity-acting cams and are fabricated from a die cast aluminum alloy with a brushed finish and wrap around flanges. The cam is constructed from a $\frac{3}{4}$ " diameter nylon rod and a $\frac{3}{8}$ " stainless steel pin. Slide latch, strike/keeper and hinges are through-bolted onto doors and pilasters using stainless steel vandal-resistant through bolts. Hinges are easily adjusted at the jobsite to a full close or partially open position, as required. Keeper provides for emergency access into the stall by lifting up on the bottom of the door.
 - 2. Optional: Continuous stainless steel hinge. Slide latch, strike/keeper and hinges are through bolted onto doors and pilasters using stainless steel, vandal-resistant through bolts.
- B. Panel and pilaster brackets shall be as noted:
 - 1. Stainless steel stirrup brackets shall be 2" long. Stirrup brackets shall be $\frac{1}{8}$ " thick and mounted with stainless steel, vandal-resistant screws. Panels shall be attached with stainless steel, vandal-resistant through bolts. The attachment of brackets to the adjacent wall construction shall be accomplished with 2 $\frac{1}{2}$ " stainless steel vandal-resistant screws and plastic anchors.
 - 2. Optional: Continuous heavy duty anodized extruded aluminum (6063-T5 alloy) wall brackets are pre-drilled. Wall brackets are mounted with stainless steel, vandal-resistant screws. The attachment of brackets to the adjacent wall construction shall be accomplished with 2 $\frac{1}{2}$ " stainless steel vandal resistant screws and plastic anchors.
 - 3. Optional: Continuous heavy duty stainless steel wall brackets are pre-drilled. Wall brackets are mounted with stainless steel, vandal-resistant screws. The attachment of brackets to the adjacent wall construction shall be accomplished with 2 $\frac{1}{2}$ " stainless steel vandal resistant screws and plastic anchors.
- C. Pilaster shoes shall be of type 304 steel #4 finish.

PART-3 EXECUTION**3.01 PREPARATION**

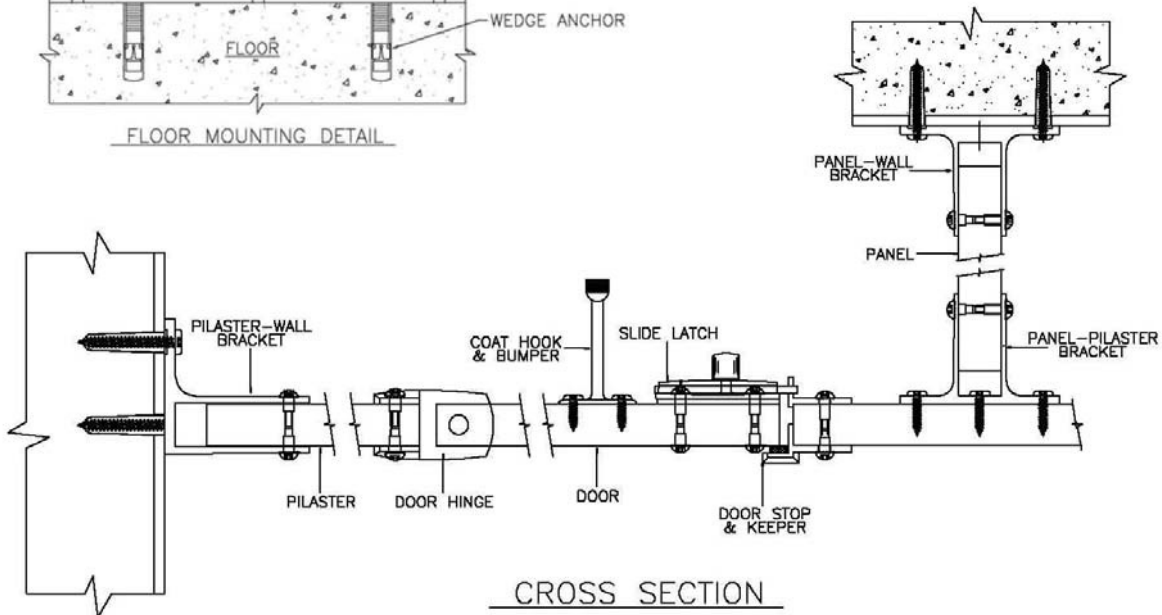
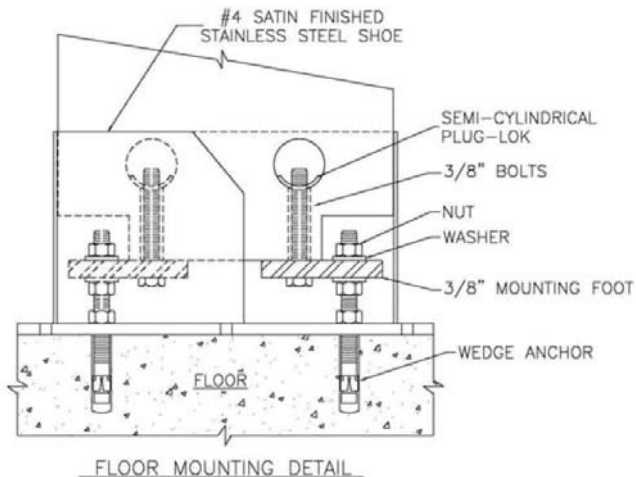
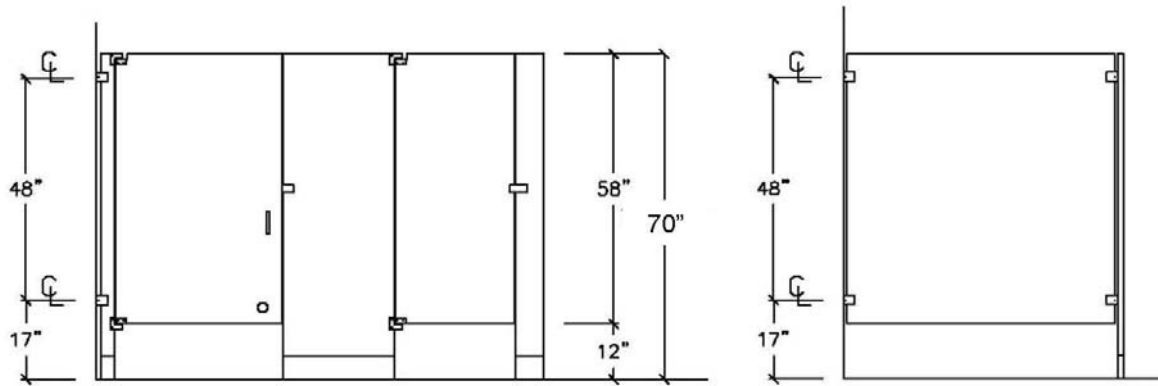
- A. Examine areas to receive toilet compartments for correct height and spacing of anchorage/blocking and plumbing fixtures that may affect installation of compartments. Report any discrepancies to the architect.
- B. Take complete and accurate measurements of toilet compartment locations.
- C. Start of work constitutes acceptance of job.

3.02 INSTALLATION

- A. Install compartments in a rigid, straight, plumb and level manner as shown on the shop drawings and manufacturer's installation instructions.
- B. All doors and panels to be mounted at 12" above the finished floor.
- C. Clearance at vertical edges of door shall be uniform top to bottom.
- D. No evidence of cutting, drilling and/or patching shall be visible on the finished work.
- E. Finished surfaces shall be cleaned after installation and be left free of all imperfections.

3.03 WARRANTY

- A. ASI Global Partitions guarantees its black core phenolic units, properly maintained, against delamination, breakage or corrosion for 25 years from the date of receipt by the customer. If materials are found defective during that period for the reasons listed above, the material will be replaced free of charge. No credits or allowances will be issued for any labor or expenses relating to the replacement of components covered under the warranty plan. All such expenses are to be borne by the buyer.





SECTION 10155

TOILET COMPARTMENTS

PART 1 GENERAL

1.1 SECTION INCLUDES

- A. Phenolic partitions.

1.2 RELATED SECTIONS

- A. Section 05500 - Metal Fabrications: Concealed steel support members.
- B. Section 06110 - Wood Framing: Concealed wood framing and blocking for compartment support.
- C. Section 10800 - Toilet and Bath Accessories.

1.3 REFERENCES

- A. ASTM E 84 - Standard Test Method for Surface Burning Characteristics of Building Materials.

1.4 SUBMITTALS

- A. Submit under provisions of Section 01300.
- B. [Product Data]: Manufacturer's data sheets on each product to be used, including:
 - 1. Literature indicating typical panel, pilaster, door, hardware and fastening.
 - 2. Preparation instructions and recommendations.
 - 3. Storage and handling requirements and recommendations.
 - 4. Installation methods.
- C. Shop Drawings:
 - 1. Dimensioned plans indicating layout of toilet compartments.
 - 2. Dimensioned elevations indicating heights of doors, pilasters, separation partitions, and other components; indicate locations and sizes of openings in compartment separation partitions for toilet and bath accessories to be installed in partitions; indicate floor and ceiling clearances.
 - 3. Details indicating anchoring components (bolt layouts) and methods for project conditions; indicate components required for installation, but not supplied by toilet compartment manufacturer.
- D. Selection Samples: For each finish product specified, one complete set of color selection guides representing manufacturer's full range of available colors, textures

and patterns.

- E. Verification Samples: For each finish product specified, two samples, minimum size 6 inches (150 mm) square, representing actual product, color, texture and pattern.
- F. LEED Green Building Rating System: Submit manufacturer's documentation of recycled content, in accordance with LEED credit calculations.
- G. Manufacturer's Certificates: Certify products meet or exceed specified requirements.

1.5 DELIVERY, STORAGE, AND HANDLING

- A. Store products in manufacturer's unopened packaging until ready for installation.
- B. Lay cartons flat, with adequate support to ensure flatness and to prevent damage to pre-finished surfaces.
- C. Do not store where ambient temperature exceeds 120 degrees F (49 degrees C).

1.6 PROJECT CONDITIONS

- A. Maintain environmental conditions (temperature, humidity, and ventilation) within limits recommended by manufacturer for optimum results. Do not install products under environmental conditions outside manufacturer's absolute limits.
- B. Do not deliver materials or begin installation until building is enclosed, with complete protection from outside weather, and building temperature maintained at a minimum of 60 degrees F (15.6 degrees C).

1.7 WARRANTY

- A. Warranty: Provide warranty for Phenolic Material against delamination, breakage, or corrosion for 25 years, assuming proper maintenance according to manufacturer's recommendations.

1.8 COORDINATION

- A. Coordinate Work with placement of support framing and anchors in walls and ceilings.

PART 2 PRODUCTS

2.1 MANUFACTURERS

- A. Acceptable Manufacturer: ASI Global Partitions, which is located at: 900 Clary Connector; Eastanollee, GA 30538; Tel: 706-827-2700; Fax: 706-827-2710; Email: request info (sales@asi-globalpartitions.com); Web: www.asi-globalpartitions.com
- B. Requests for substitutions will be considered in accordance with provisions of Section 01600.

2.2 COMPARTMENTS AND SCREENS

- A. Toilet Compartments: Floor anchored/overhead braced.
 - 1. Compartment Depth and Width: As indicated on drawings.
 - 2. Door Width: As indicated on the Drawings.
 - 3. Height Above Floor: 12 inches (305 mm).

4. Door/Panel Height: 58 inches (1473 mm).
 5. Pilaster Height: 82 inches (2083 mm).
- B. Privacy and Urinal Screens: Wall hung.
1. Screen Panel Size: 24 inches (610 mm) wide by 48 inches (1219 mm) high.
 2. Height Above Floor: 18 inches (457 mm).

2.3 SOLID PHENOLIC / COLOR-THRU TOILET COMPARTMENTS

- A. Doors, Panels, Screens, and Pilasters: Decorative surface sheet with solid phenolic core of melamine resin impregnated kraft paper fused under high temperature and pressure; edges machine sanded with a 45 degree radius edge. Manufacturer's standard.
1. Doors and Pilasters: 3/4 inch (19 mm) thick.
 2. Panels and Screens: 1/2 inch (13 mm) thick.
 3. Edges: Black core.
 4. Fire Rated Material: Black core is Class B. Color thru Class A
- B. Finish: Solid phenolic/color-thru, as selected from manufacturer's standard colors.
- C. Door Hardware: Vault hinge.
1. Top Hinge: Heavy-duty "vault" type, die-cast aluminum alloy with brushed chrome-plated finish; wrap-around pilaster and door mounting, through-bolted.
 2. Bottom Hinge: Same as top hinge, with gravity-acting cams.
 3. Latch: Non-ferrous, satin chrome-plated, slide latch.
 4. Strike and Keeper: Permitting emergency access by lifting the door until latch is clear of keeper; satin chrome-plated finish.
 5. Coat Hook and Bumper: Non-ferrous, chrome-plated, with black rubber tip for doorstop.
 6. Fastening Hardware: Manufacturer's standard, Type 304 stainless steel, No. 4 satin finish, with theft-resistant barrel nuts and machine screws.
- D. Mounting Brackets: Die-cast Type 304 stainless steel stirrup bracket, No. 4 satin finish, with stainless steel theft-resistant barrel nuts and machine screws of same material and finish.
- E. Headrail: Manufacturer's standard anodized aluminum rail with anti-grip profile.
- F. Pilaster Anchors, Floor Anchored/Overhead Braced: Easy Stall shoe system. 1/4 inch by 2 inch steel screws attach Easy Stall shoe to floor. Pilaster to be inserted into shoe and secured after height adjusted. Leveling adjustment to be concealed by pilaster shoe. Height/leveling adjustment to be made via machine thread bolts inserted into threaded insert in bottom of pilaster. Shoe to be constructed of type 304 stainless steel and to be 3" high.

PART 3 EXECUTION

3.1 EXAMINATION

- A. Do not begin installation until installation conditions and substrates have been properly prepared.
- B. Verify dimensions of areas to receive compartments.
- C. Verify locations of built-in framing, anchorage, bracing, and plumbing fixtures.
- D. Verify substrates have been properly installed.

- E. If installation conditions and substrate preparation is the responsibility of another installer, notify Architect of unsatisfactory preparation before proceeding.

3.2 PREPARATION

- A. Clean surfaces thoroughly prior to installation.
- B. Prepare surfaces using the methods recommended by the manufacturer for achieving the best result for the substrate under the project conditions.

3.3 INSTALLATION

- A. Install in accordance with approved shop drawings and manufacturer's instructions.
- B. Fasten components to adjacent materials and to other components using purpose-designed fastening devices.
- C. Adjust pilaster anchors for substrate variations; conceal anchors with pilaster shoes.
- D. Equip each compartment door with top and bottom hinges and door latch.
- E. Install door strike keeper on pilasters in alignment with door latch.
- F. Equip each compartment door with one coat hook and bumper.
- G. Installation Tolerances:
 - 1. Maximum variations from plumb or level: 1/8 inch (3 mm).
 - 2. Clearance between wall surface and panels or pilasters: 1-1/2 inch (38 mm) maximum.

3.4 ADJUSTING

- A. Adjust and align hardware to uniform clearance at vertical edge of doors.
- B. Adjust adjacent components for consistency of line or plane.

3.5 PROTECTION

- A. Protect installed products until completion of project.
- B. Touch-up, repair or replace damaged products before Substantial Completion.
- C. Remove factory protective coverings and clean finish surfaces in accordance with manufacturer's instructions before substantial completion.

3.6 SCHEDULE

END OF SECTION