

PART-1 GENERAL**1.01 DESCRIPTION**

- A. Particle board core compartment work includes the following:
 - 1. Floor and ceiling anchored partitions.
- B. Furnish all labor and materials necessary for the completion of work in this section as shown on the contract drawings and specified herein.
- C. Work in this section shall include but is not limited to:
 - 1. Toilet compartments
 - 2. Hardware for toilet compartments
 - 3. Shop drawings and working drawings
 - 4. Manufacturer's guarantee
- D. Related work specified elsewhere shall include accessories and anchorage/blocking for attachment of compartments.

1.02 PRODUCTS

- A. Submittal of shop drawings and details, for architect's approval.
- B. Colors shall be selected from the manufacturer's standard range of colors.
- C. Color and hardware samples shall be submitted for approval to the architect upon request.

PART-2 PRODUCTS**2.01 MANUFACTURER**

- A. Toilet compartments to be supplied by Global Partitions, Eastanollee, GA 30538.

2.02 MATERIALS

- A. Doors and panels shall be 1" thick, constructed of decorative plastic laminate, bonded with a non-toxic adhesive under pressure to a 7/8" particle board core; the laminate to be 0.050" with a matte finish; the core to be 45-pound density, resin impregnated particle board.
- B. Pilasters shall be 1-1/4" thick, constructed of decorative plastic laminate, bonded with a non-toxic adhesive under pressure to a 1-1/8" particle board core; the laminate to be 0.050" with a matte finish; the core to be 45-pound density, resin impregnated particle board.

2.03 CONSTRUCTION

- A. Doors and panels finished shall be 1". All face and edge surfaces to be covered with decorative laminate, face surfaces to overlap all edges so that joints between laminates fall on the edge surface of components only. Doors to be recessed to accept hinges within the door and yield bi-directional operation about an axis within the plane of the door.
- B. Pilasters shall be floor and ceiling anchored with a finished thickness of 1-1/4". All face and edge surfaces to be covered with decorative laminate, face surfaces to overlap all edges so that joints between laminates fall on the edge surface of components only. Pilasters shall include a mounting system comprised of 1/4" x 1" steel mounting bar attached to the pilaster in a GLOBAL PLUG LOC arrangement, having 3/8" zinc plated steel bolts secured to 1/8" thick semi cylindrical PLUG LOC imbedded within a contoured aperture transversely piercing the core. Each mounting bar shall be secured to the building structure with 3/8" zinc plated steel studs. A shoe shall conceal each floor and ceiling mounting having an internal cross section conforming to the pilaster.
- C. The color and texture of the finish on plastic laminate units is determined by the selected decorative pattern.

2.04 HARDWARE (NOTE: Refer to the ORDER INFORMATION CONTRACT for specific hardware to be supplied on your order.)

- A. All exposed door hardware shall be as noted:
 - 1. Chromium plated die cast zamac hinge shall have gravity acting cam and wrap around flanges. Slide latch, strike/keeper and hinges are through bolted onto doors and pilasters using chromium plated vandal resistant through bolts. Keeper provides for emergency access into the stall by lifting up on the bottom of the door.
 - 2. Optional: Stainless steel die cast hinge shall have gravity acting cam and wrap around flanges. Slide latch, strike/keeper and hinges are through bolted onto doors and pilasters using stainless steel vandal resistant through bolts. Keeper provides for emergency access into the stall by lifting up on the bottom of the door.
 - 3. Optional: Continuous stainless steel hinge. Slide latch, strike/keeper and hinges are through bolted onto doors and pilasters using stainless steel vandal-resistant through bolts.
- B. Panel and pilaster brackets shall be as noted:
 - 1. Stirrup brackets shall be 2 1/8" long chromium plated die cast zamac. Stirrup brackets shall be 1/8" thick and mounted with chrome plated steel vandal resistant through bolts. The attachment of brackets to the adjacent wall construction shall be accomplished with 2 1/2" chrome plated steel vandal resistant screws and plastic anchors.
 - 2. Optional: Stirrup brackets shall be 2 1/8" long die cast stainless steel. Stirrup brackets shall be 1/8" thick and mounted with stainless steel vandal resistant through bolts. The attachment of brackets to the adjacent wall construction shall be accomplished with 2 1/2" stainless steel vandal resistant screws and plastic anchors.
 - 3. Optional: Continuous heavy duty anodized extruded aluminum (6063-T5 alloy) wall brackets are pre-drilled. Wall brackets are mounted with chromium plated steel vandal resistant through bolts. The attachment of brackets to the adjacent wall construction shall be accomplished with 2 1/2" chromium plated steel vandal resistant screws and plastic anchors.
 - 4. Optional: Continuous heavy duty stainless steel wall brackets are pre-drilled. Wall brackets are mounted with stainless steel, vandal resistant through bolts. The attachment of brackets to the adjacent wall construction shall be accomplished with 2 1/2" stainless steel vandal resistant screws and plastic anchors.
- C. Pilaster shoes shall be stainless steel 5" high with a #4 satin finish. Pilaster shoes are anchored to the pilaster with #10 stainless steel vandal resistant screw.

FLOOR AND CEILING ANCHORED

Date Issued 08-18

PART-3 EXECUTION

3.01 PREPARATION

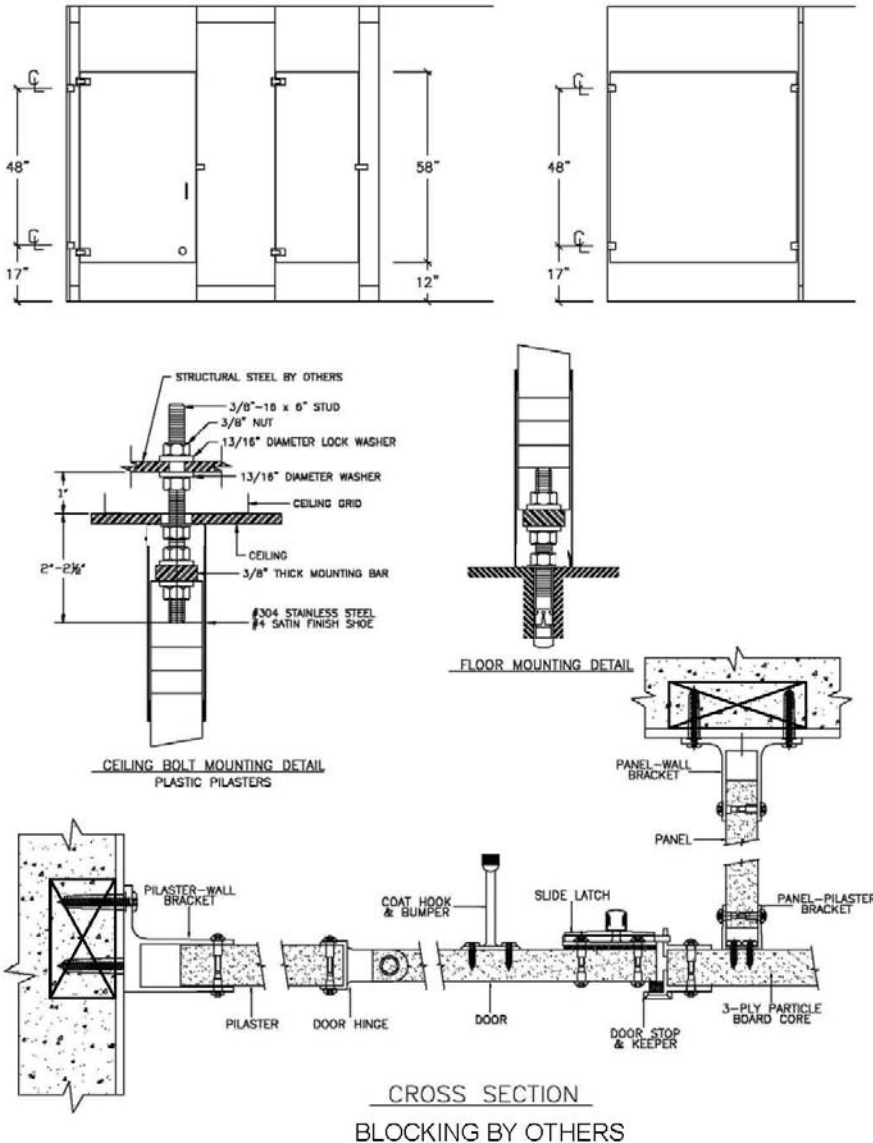
- A. Examine areas to receive toilet compartments for correct height and spacing of anchorage/blocking and plumbing fixtures that may affect installation of compartments. Report any discrepancies to the architect.
- B. Take complete and accurate measurements of toilet compartment locations.
- C. Start of work constitutes acceptance of job.

3.02 INSTALLATION

- A. Install compartments in a rigid, straight, plumb and level manner as shown on the shop drawings and manufacturer's installation instructions.
- B. All doors and panels to be mounted at 12" above the finished floor.
- C. Clearance at vertical edges of door shall be uniform top to bottom.
- D. No evidence of cutting, drilling and/or patching shall be visible on the finished work.
- E. Finished surfaces shall be cleaned after installation and be left free of all imperfections.

3.03 WARRANTY

- A. Global Partitions guarantees its plastic laminated units, properly maintained, against discoloration or delamination for 2 years from the date of receipt by the customer. If materials are found defective during that period for the reasons listed above, the material will be replaced free of charge. No credits or allowances will be issued for any labor or expenses relating to the replacement of components covered under the warranty plan. All such expenses are to be borne by the buyer.



PART-1 GENERAL

1.01 DESCRIPTION

- A. Particle board core compartment work includes the following:
 - 1. Ceiling anchored partitions.
- B. Furnish all labor and materials necessary for the completion of work in this section as shown on the contract drawings and specified herein.
- C. Work in this section shall include but is not limited to:
 - 1. Toilet compartments
 - 2. Hardware for toilet compartments
 - 3. Shop drawings and working drawings
 - 4. Manufacturer's guarantee
- D. Related work specified elsewhere shall include accessories and anchorage/blocking for attachment of compartments.

1.02 PRODUCTS

- A. Submittal of shop drawings and details, for architect's approval.
- B. Colors shall be selected from the manufacturer's standard range of colors.
- C. Color and hardware samples shall be submitted for approval to the architect upon request.

PART-2 PRODUCTS

2.01 MANUFACTURER

- A. Toilet compartments to be supplied by Global Partitions, Eastanollee, GA 30538.

2.02 MATERIALS

- A. Doors and panels shall be 1" thick, constructed of decorative plastic laminate, bonded with a non-toxic adhesive under pressure to a 7/8" particle board core; the laminate to be 0.050" with a matte finish; the core to be 45-pound density, resin impregnated particle board.
- B. Pilasters shall be 1-1/4" thick, constructed of decorative plastic laminate, bonded with a non-toxic adhesive under pressure to a 1-1/8" particle board core; the laminate to be 0.050" with a matte finish; the core to be 45-pound density, resin impregnated particle board.

2.03 CONSTRUCTION

- A. Doors and panels finished shall be 1". All face and edge surfaces to be covered with decorative laminate, face surfaces to overlap all edges so that joints between laminates fall on the edge surface of components only. Doors to be recessed to accept hinges within the door and yield bi-directional operation about an axis within the plane of the door.
- B. Pilasters shall be ceiling anchored with a finished thickness of 1-1/4". All face and edge surfaces to be covered with decorative laminate, face surfaces to overlap all edges so that joints between laminates fall on the edge surface of components only. Pilasters shall include a mounting system comprised of 3/4" x 1" steel mounting bar attached to the pilaster in a GLOBAL PLUG LOC arrangement, having 3/8" zinc plated steel bolts secured to 1/8" thick semi cylindrical PLUG LOC imbedded within a contoured aperture transversely piercing the core. Each mounting bar shall be secured to the building structure with 3/8" zinc plated steel studs. A shoe shall conceal each ceiling mounting having an internal cross section conforming to the pilaster.
- C. The color and texture of the finish on plastic laminate units is determined by the selected decorative pattern.

2.04 HARDWARE (NOTE: Refer to the ORDER INFORMATION CONTRACT for specific hardware to be supplied on your order.)

- A. All exposed door hardware shall be as noted:
 - 1. Chromium plated die cast zamac hinge shall have gravity acting cam and wrap around flanges. Slide latch, strike/keeper and hinges are through bolted onto doors and pilasters using chromium plated vandal resistant through bolts. Keeper provides for emergency access into the stall by lifting up on the bottom of the door.
 - 2. Optional: Stainless steel die cast hinge shall have gravity acting cam and wrap around flanges. Slide latch, strike/keeper and hinges are through bolted onto doors and pilasters using stainless steel vandal resistant through bolts. Keeper provides for emergency access into the stall by lifting up on the bottom of the door.
 - 3. Optional: Continuous stainless steel hinge. Slide latch, strike/keeper and hinges are through bolted onto doors and pilasters using stainless steel vandal-resistant through bolts.
- B. Panel and pilaster brackets shall be as noted:
 - 1. Stirrup brackets shall be 2 1/8" long chromium plated die cast zamac. Stirrup brackets shall be 1/8" thick and mounted with chrome plated steel vandal resistant through bolts. The attachment of brackets to the adjacent wall construction shall be accomplished with 2 1/2" chrome plated steel vandal resistant screws and plastic anchors.
 - 2. Optional: Stirrup brackets shall be 2 1/8" long die cast stainless steel. Stirrup brackets shall be 1/8" thick and mounted with stainless steel vandal resistant through bolts. The attachment of brackets to the adjacent wall construction shall be accomplished with 2 1/2" stainless steel vandal resistant screws and plastic anchors.
 - 3. Optional: Continuous heavy duty anodized extruded aluminum (6063-T5 alloy) wall brackets are pre-drilled. Wall brackets are mounted with chromium plated steel vandal resistant through bolts. The attachment of brackets to the adjacent wall construction shall be accomplished with 2 1/2" chromium plated steel vandal resistant screws and plastic anchors.
 - 4. Optional: Continuous heavy duty stainless steel wall brackets are pre-drilled. Wall brackets are mounted with stainless steel, vandal resistant through bolts. The attachment of brackets to the adjacent wall construction shall be accomplished with 2 1/2" stainless steel vandal resistant screws and plastic anchors.
- C. Pilaster shoes shall be stainless steel 5" high with a #4 satin finish. Pilaster shoes are anchored to the pilaster with #10 stainless steel vandal resistant screw.

CEILING ANCHORED

Date Issued 08-18

PART-3 EXECUTION

3.01 PREPARATION

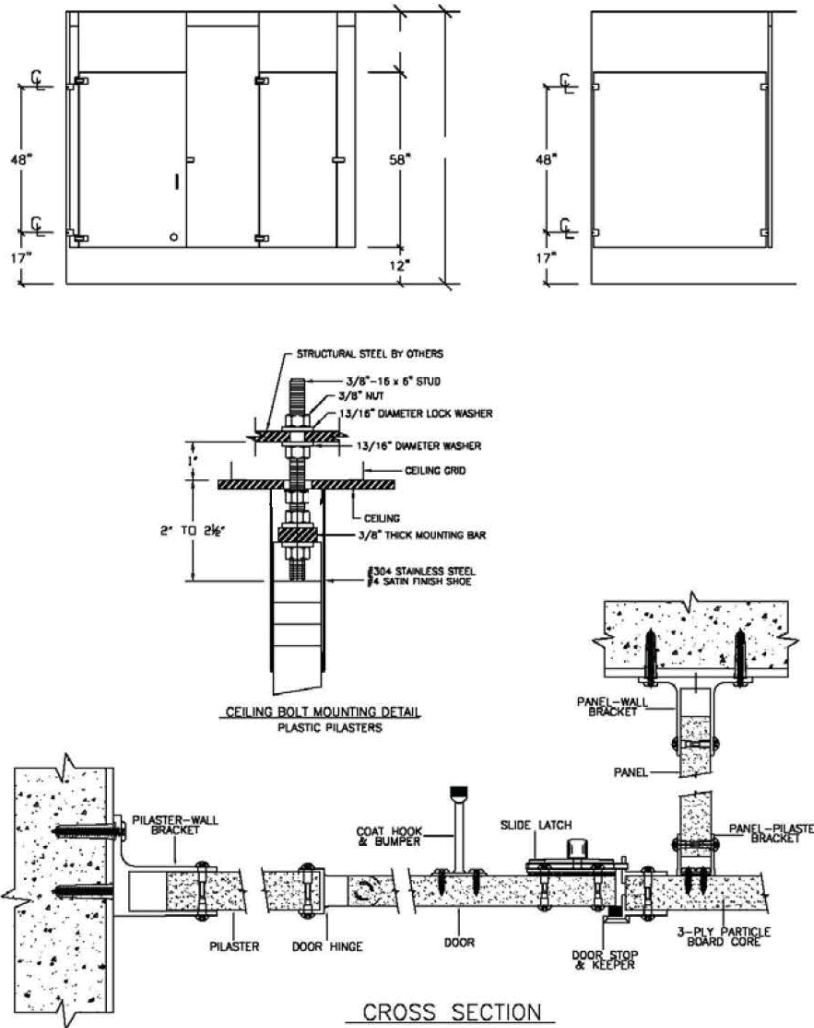
- A. Examine areas to receive toilet compartments for correct height and spacing of anchorage/blocking and plumbing fixtures that may affect installation of compartments. Report any discrepancies to the architect.
- B. Take complete and accurate measurements of toilet compartment locations.
- C. Start of work constitutes acceptance of job.

3.02 INSTALLATION

- A. Install compartments in a rigid, straight, plumb and level manner as shown on the shop drawings and manufacturer's installation instructions.
- B. All doors and panels to be mounted at 12" above the finished floor.
- C. Clearance at vertical edges of door shall be uniform top to bottom.
- D. No evidence of cutting, drilling and/or patching shall be visible on the finished work.
- E. Finished surfaces shall be cleaned after installation and be left free of all imperfections.

3.03 WARRANTY

- A. Global Partitions guarantees its plastic laminated units, properly maintained, against discoloration or delamination for 2 years from the date of receipt by the customer. If materials are found defective during that period for the reasons listed above, the material will be replaced free of charge. No credits or allowances will be issued for any labor or expenses relating to the replacement of components covered under the warranty plan. All such expenses are to be borne by the buyer.



PART-1 GENERAL

1.01 DESCRIPTION

- A. Particle board core compartment work includes the following:
 - 1. Floor anchored partitions.
- B. Furnish all labor and materials necessary for the completion of work in this section as shown on the contract drawings and specified herein.
- C. Work in this section shall include but is not limited to:
 - 1. Toilet compartments
 - 2. Hardware for toilet compartments
 - 3. Shop drawings and working drawings
 - 4. Manufacturer's guarantee
- D. Related work specified elsewhere shall include accessories and anchorage/blocking for attachment of compartments.

1.02 PRODUCTS

- A. Submittal of shop drawings and details, for architect's approval.
- B. Colors shall be selected from the manufacturer's standard range of colors.
- C. Color and hardware samples shall be submitted for approval to the architect upon request.

PART-2 PRODUCTS

2.01 MANUFACTURER

- A. Toilet compartments to be supplied by Global Partitions, Eastanollee, GA 30538.

2.02 MATERIALS

- A. Doors and panels shall be 1" thick, constructed of decorative plastic laminate, bonded with a non-toxic adhesive under pressure to a 7/8" particle board core; the laminate to be 0.050" with a matte finish; the core to be 45-pound density, resin impregnated particle board.
- B. Pilasters shall be 1-1/4" thick, constructed of decorative plastic laminate, bonded with a non-toxic adhesive under pressure to a 1-1/8" particle board core; the laminate to be 0.050" with a matte finish; the core to be 45-pound density, resin impregnated particle board.

2.03 CONSTRUCTION

- A. Doors and panels finished shall be 1". All face and edge surfaces to be covered with decorative laminate, face surfaces to overlap all edges so that joints between laminates fall on the edge surface of components only. Doors to be recessed to accept hinges within the door and yield bi-directional operation about an axis within the plane of the door.
- B. Pilasters shall be floor anchored with a finished thickness of 1-1/4". All face and edge surfaces to be covered with decorative laminate, face surfaces to overlap all edges so that joints between laminates fall on the edge surface of components only. Pilasters shall include a mounting system comprised of 1/4" x 1" steel mounting bar attached to the pilaster in a GLOBAL PLUG LOC arrangement, having 3/8" zinc plated steel bolts secured to 1/8" thick semi cylindrical PLUG LOC imbedded within a contoured aperture transversely piercing the core. Each mounting bar shall be secured to the building structure with 3/8" zinc plated steel studs. A shoe shall conceal each floor mounting having an internal cross section conforming to the pilaster.
- C. The color and texture of the finish on plastic laminate units is determined by the selected decorative pattern.

2.04 HARDWARE (NOTE: Refer to the ORDER INFORMATION CONTRACT for specific hardware to be supplied on your order.)

- A. All exposed door hardware shall be as noted:
 - 1. Chromium plated die cast zamac hinge shall have gravity acting cam and wrap around flanges. Slide latch, strike/keeper and hinges are through bolted onto doors and pilasters using chromium plated vandal resistant through bolts. Keeper provides for emergency access into the stall by lifting up on the bottom of the door.
 - 2. Optional: Stainless steel die cast hinge shall have gravity acting cam and wrap around flanges. Slide latch, strike/keeper and hinges are through bolted onto doors and pilasters using stainless steel vandal resistant through bolts. Keeper provides for emergency access into the stall by lifting up on the bottom of the door.
 - 3. Optional: Continuous stainless steel hinge. Slide latch, strike/keeper and hinges are through bolted onto doors and pilasters using stainless steel vandal-resistant through bolts.
- B. Panel and pilaster brackets shall be as noted:
 - 1. Stirrup brackets shall be 2 1/8" long chromium plated die cast zamac. Stirrup brackets shall be 1/8" thick and mounted with chrome plated steel vandal resistant through bolts. The attachment of brackets to the adjacent wall construction shall be accomplished with 2 1/2" chrome plated steel vandal resistant screws and plastic anchors.
 - 2. Optional: Stirrup brackets shall be 2 1/8" long die cast stainless steel. Stirrup brackets shall be 1/8" thick and mounted with stainless steel vandal resistant through bolts. The attachment of brackets to the adjacent wall construction shall be accomplished with 2 1/2" stainless steel vandal resistant screws and plastic anchors.
 - 3. Optional: Continuous heavy duty anodized extruded aluminum (6063-T5 alloy) wall brackets are pre-drilled. Wall brackets are mounted with chromium plated steel vandal resistant through bolts. The attachment of brackets to the adjacent wall construction shall be accomplished with 2 1/2" chromium plated steel vandal resistant screws and plastic anchors.
 - 4. Optional: Continuous heavy duty stainless steel wall brackets are pre-drilled. Wall brackets are mounted with stainless steel, vandal resistant through bolts. The attachment of brackets to the adjacent wall construction shall be accomplished with 2 1/2" stainless steel vandal resistant screws and plastic anchors.
- C. Pilaster shoes shall be stainless steel 5" high with a #4 satin finish. Pilaster shoes are anchored to the pilaster with #10 stainless steel vandal resistant screw.

FLOOR ANCHORED

Date Issued 08-18

PART-3 EXECUTION

3.01 PREPARATION

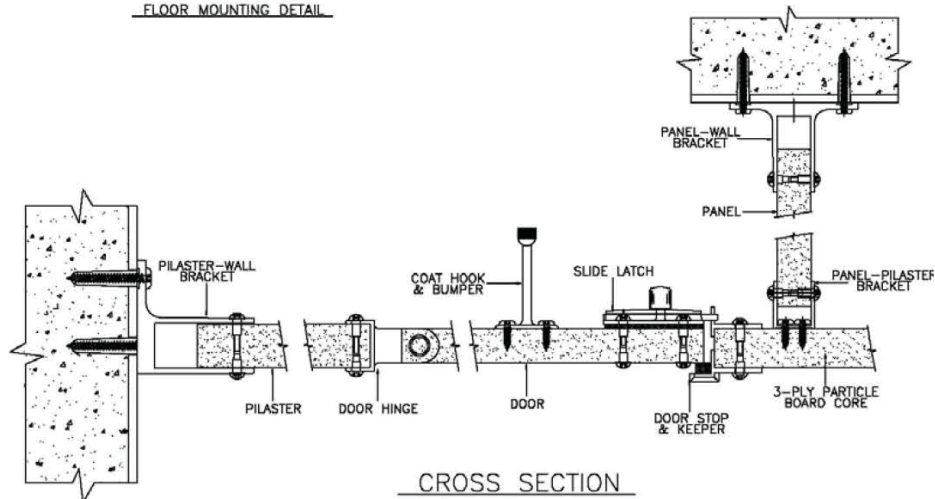
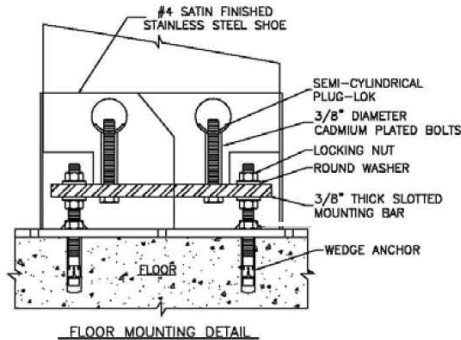
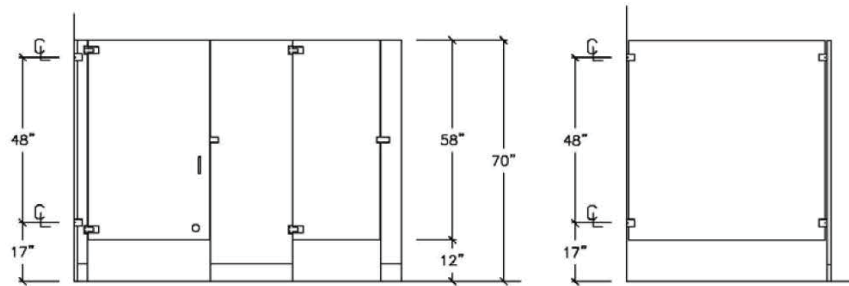
- A. Examine areas to receive toilet compartments for correct height and spacing of anchorage/blocking and plumbing fixtures that may affect installation of compartments. Report any discrepancies to the architect.
- B. Take complete and accurate measurements of toilet compartment locations.
- C. Start of work constitutes acceptance of job.

3.02 INSTALLATION

- A. Install compartments in a rigid, straight, plumb and level manner as shown on the shop drawings and manufacturer's installation instructions.
- B. All doors and panels to be mounted at 12" above the finished floor.
- C. Clearance at vertical edges of door shall be uniform top to bottom.
- D. No evidence of cutting, drilling and/or patching shall be visible on the finished work.
- E. Finished surfaces shall be cleaned after installation and be left free of all imperfections.

3.03 WARRANTY

- A. Global Partitions guarantees its plastic laminated units, properly maintained, against discoloration or delamination for 2 years from the date of receipt by the customer. If materials are found defective during that period for the reasons listed above, the material will be replaced free of charge. No credits or allowances will be issued for any labor or expenses relating to the replacement of components covered under the warranty plan. All such expenses are to be borne by the buyer.





SECTION 10155
TOILET COMPARTMENTS

PART 1 GENERAL

1.1 SECTION INCLUDES

- A. Plastic laminate partitions.

1.2 RELATED SECTIONS

- A. Section 05500 - Metal Fabrications: Concealed steel support members.
- B. Section 06110 - Wood Framing: Concealed wood framing and blocking for compartment support.
- C. Section 10800 - Toilet and Bath Accessories.

1.3 REFERENCES

- A. ASTM International:
 - 1. ASTM E 84 - Standard Test Method for Surface Burning Characteristics of Building Materials.
- B. United States Green Building Council (USGBC): LEED Green Building Rating System.

1.4 SUBMITTALS

- A. Submit under provisions of Section 01300.
- B. [Product Data]: Manufacturer's data sheets on each product to be used, including:
 - 1. Literature indicating typical panel, pilaster, door, hardware and fastening.
 - 2. Preparation instructions and recommendations.
 - 3. Storage and handling requirements and recommendations.
 - 4. Installation methods.
- C. Shop Drawings:
 - 1. Dimensioned plans indicating layout of toilet compartments.
 - 2. Dimensioned elevations indicating heights of doors, pilasters, separation partitions, and other components; indicate locations and sizes of openings in compartment separation partitions for toilet and bath accessories to be installed in partitions; indicate floor and ceiling clearances.
 - 3. Details indicating anchoring components (bolt layouts) and methods for project conditions; indicate components required for installation, but not supplied by toilet compartment manufacturer.
- D. Selection Samples: For each finish product specified, one complete set of color selection guides representing manufacturer's full range of available colors, textures and patterns.
- E. Verification Samples: For each finish product specified, two samples, minimum size 6 inches (150 mm) square, representing actual product, color, texture and pattern.

- F. LEED Green Building Rating System: Submit manufacturer's documentation of recycled content, in accordance with LEED credit calculations.
- G. Manufacturer's Certificates: Certify products meet or exceed specified requirements.

1.5 DELIVERY, STORAGE, AND HANDLING

- A. Deliver, store and handle materials and products in strict compliance with manufacturer's instructions and recommendations and industry standards.
- B. Store products indoors in manufacturer's or fabricator's original containers and packaging, with labels clearly identifying product name and manufacturer. Protect from damage.
- C. Lay cartons flat, with adequate support to ensure flatness and to prevent damage to pre-finished surfaces.
- D. Do not store where ambient temperature exceeds 120 degrees F (49 degrees C).

1.6 PROJECT CONDITIONS

- A. Maintain environmental conditions (temperature, humidity, and ventilation) within limits recommended by manufacturer for optimum results. Do not install products under environmental conditions outside manufacturer's absolute limits.
- B. Do not deliver materials or begin installation until building is enclosed, with complete protection from outside weather, and building temperature maintained at a minimum of 60 degrees F (15.6 degrees C).

1.7 WARRANTY

- A. Manufacturers Standard Warranty: Provide warranty for Plastic Laminate Material, Against discoloration or delamination for 2 years, assuming proper maintenance according to manufacturer's recommendations.

1.8 COORDINATION

- A. Coordinate Work with placement of support framing and anchors in walls and ceilings.

PART 2 PRODUCTS

2.1 MANUFACTURERS

- A. Acceptable Manufacturer: Global Partitions, which is located at: 900 Clary Connector; Eastanollee, GA 30538; Tel: 706-827-2700; Fax: 706-827-2710; Email: [request info \(sales@asi-globalpartitions.com\)](mailto:request_info@asi-globalpartitions.com); Web: www.asi-globalpartitions.com
 - 1. Acceptable Alternate
 - a. ASI-Accurate located in McCook, IL
- B. Requests for substitutions will be considered in accordance with provisions of Section 01600.

2.2 COMPARTMENTS AND SCREENS

- A. Toilet Compartments: Floor anchored/overhead braced.
 - 1. Compartment Depth and Width: As scheduled and indicated on Drawings.
 - 2. Door Width: 24 inches (610 mm), minimum; at ADA accessible compartments 36 inches (915 mm) minimum.
 - 3. Height Above Floor: 12 inches (305 mm).

4. Door/Panel Height: 58 inches (1473 mm).
 5. Pilaster Height: 82 inches (2083 mm).
- B. Privacy and Urinal Screens: Wall hung.
1. Screen Panel Size: 18 inches (457 mm) wide by 48 inches (1219 mm) high.
 2. Height Above Floor: 18 inches (457 mm).

2.3 PLASTIC LAMINATE TOILET COMPARTMENTS

- A. Doors, Panels, Screens, and Pilasters: Decorative plastic laminate bonded under pressure with non-toxic adhesive to wood core.
- B. Doors, Screens, and Panels: 7/8 inch (22 mm) thick particleboard; finished thickness of 1 inch (25 mm).
1. Pilasters: 1-1/8 inches (29 mm) thick particleboard; finished thickness of 1-1/4 inch (32 mm). Pilaster to be provided with Moisture Guard Edge Band on all four (4) edges of pilaster.
- C. Finish: Plastic laminate, color as selected from manufacturer's standard colors.
- D. Door Hardware:
1. Finish: Chromium plated Zamac attached with theft resistant barrel nuts and shoulder screws. Optional 304 Stainless Steel hardware.
 2. Hinges: Top and bottom hinges recessed into door with saddle on adjacent pilaster, providing bi-directional operation about axis within the plane of the door; adjustable cams supporting door, returning to resting position by gravity.
 3. Strike and Keeper: Emergency access by lifting door.
 4. Latch: Manufacturer's standard surface mounted.
 5. Coat Hook and Bumper: Manufacturer's standard surface mounted. No tamper resistant screws required.
 6. Door Pull: Standard on ADA compartments.
 7. Fastening Hardware: Theft resistant heads.
- E. Mounting Brackets: Standard, Chromium plated Zamac stirrup brackets with theft resistant screws. Optional 304 Stainless Steel stirrup brackets or continuous brackets available.
- F. Headrail: Manufacturer's standard, Anodized Aluminum with anti-grip profile.
- G. Pilaster Anchors: Floor Anchored/Overhead Braced.
1. Easy Stall shoe system. 1/4 inch by 2 inch steel screws attach Easy Stall shoe to floor. Pilaster to be inserted into shoe and secured after height adjusted. Leveling adjustment to be concealed by pilaster shoe. Height/leveling adjustment to be made via machine thread bolts inserted into factory installed threaded insert in bottom of pilaster.

PART 3 EXECUTION

3.1 EXAMINATION AND PREPARATION

- A. Inspect and prepare substrates using the methods recommended by the manufacturer for achieving best result for the substrates under project conditions. Clean surfaces thoroughly prior to installation.
- B. Do not proceed with installation until substrates have been prepared using the methods recommended by the manufacturer and deviations from manufacturer's recommended tolerances are corrected. Commencement of installation constitutes acceptance of conditions.

- C. If preparation is the responsibility of another installer, notify Architect in writing of deviations from manufacturer's recommended installation tolerances and conditions.
 - 1. Verify dimensions of areas to receive compartments.
 - 2. Verify locations of built-in framing, anchorage, bracing, and plumbing fixtures.

3.2 INSTALLATION

- A. Install in accordance with approved shop drawings and manufacturer's instructions.
- B. Fasten components to adjacent materials and to other components using purpose-designed fastening devices.
- C. Adjust pilaster anchors for substrate variations; conceal anchors with pilaster shoes.
- D. Equip each compartment door with top and bottom hinges and door latch.
- E. Install door strike keeper on pilasters in alignment with door latch.
- F. Equip each compartment door with one coat hook and bumper.
- G. Installation Tolerances:
 - 1. Maximum variations from plumb or level: 1/8 inch (3 mm).
 - 2. Clearance between wall surface and panels or pilasters: 1-1/2 inch (38 mm) maximum.

3.3 ADJUSTING

- A. Adjust and align hardware to uniform clearance at vertical edge of doors.
- B. Adjust adjacent components for consistency of line or plane.

3.4 PROTECTION

- A. Protect installed products until completion of project.
- B. Touch-up, repair or replace damaged products before Substantial Completion.
- C. Remove factory protective coverings and clean finish surfaces in accordance with manufacturer's instructions before substantial completion.

3.5 SCHEDULE

END OF SECTION