



PhenolicUltimatePrivacy™ shown in Floor Anchored/Overhead Braced.

# PHENOLIC ULTIMATE PRIVACY™ PARTITIONS

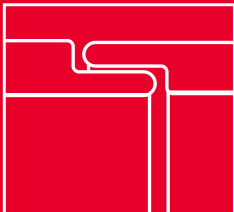
**Introducing the new Phenolic Ultimate Privacy™ Partitions.**  
The elegance, design flexibility, and durability of Phenolic is now offered in ASI's Ultimate Privacy™ configuration.

Self-Closing routed doors overlap to remove any sightlines into the stall to ensure privacy. Door hinges and latch are not visible on the outside\* creating a more visually appealing design. An occupancy latch with emergency access capability indicates when cubicle is occupied.

Doors can be 72" high and mounted as low as 6" above the finish floor for added privacy. ADA compliance can be easily achieved with appropriate depth and width or alternate mounting heights. Partitions are available in a full color spectrum.

\*on inswing doors.

## WHAT MAKES PHENOLIC ULTIMATE PRIVACY PARTITIONS UNIQUE:



### FLUSH FINISH SELF-CLOSING DOORS

All of our self-closing doors and pilasters meet in a flush finish with routed, overlapping closures for guaranteed privacy.



### EASY-STALL SHOE

Easy adjusted leveling bolt for floor anchored or overhead braced applications.



### OCCUPANCY INDICATOR

Occupancy latch with an emergency unlatching device indicates when stall is occupied.



## NEW PHENOLIC ULTIMATE PRIVACY™ PARTITIONS

Material	System	Mounting	<ul style="list-style-type: none"> <li>Door &amp; Panel Height</li> <li>Mounting Height</li> </ul>	Privacy Construction
Phenolic	Ultimate Privacy™	<ul style="list-style-type: none"> <li>Floor Mounted Overhead Braced</li> <li>Floor Mounted</li> <li>Floor to Ceiling</li> <li>Ceiling Hung</li> </ul>	<ul style="list-style-type: none"> <li>58" Doors and Panels</li> <li>12" Above Finished Floor</li> </ul>	Doors & Pilasters interlock with Zero-Sightline™ routed edges. **  Panels are attached to Pilasters and to the wall using Continuous Brackets.
	Ultimate Privacy™ -64	<ul style="list-style-type: none"> <li>Floor Mounted</li> <li>Floor to Ceiling</li> <li>Ceiling Hung</li> </ul>	<ul style="list-style-type: none"> <li>64" Doors and Panels</li> <li>6" or 9" Above Finished Floor</li> </ul>	
	Ultimate Privacy™ -72	<ul style="list-style-type: none"> <li>Floor Mounted Overhead Braced</li> <li>Floor to Ceiling</li> </ul>	<ul style="list-style-type: none"> <li>72" Doors and Panels</li> <li>6" or 9" Above Finished Floor</li> </ul>	

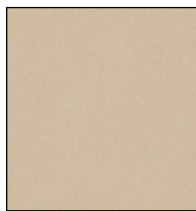
\*\*Optional privacy construction includes a Continuous Strike Keeper, a continuous hinge.



**ADA Compliance for Extra Height Stalls:** For stalls to be ADA compliant they must be configured differently allowing for toe clearance under the panels and doors. This can be achieved by adding depth and width to the stall, or by mounting doors and panels at least 9" off the finished floor.

*Please follow all ADA guidelines, making sure to also consider any local requirements.*

## PHENOLIC COLOR-THRU



Hazel 4450C



Burgundy 5450C



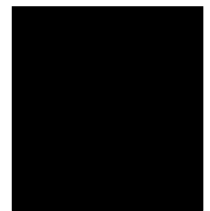
Smoke 8450C



Navy Blue 7450C

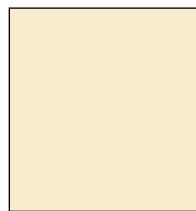


Fog 3450C



Black 2000C

## PHENOLIC BLACK CORE



Almond 4000



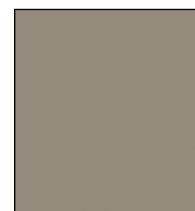
Neutral Glace 1130



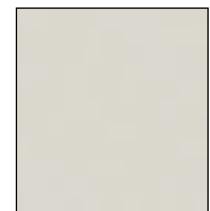
Desert Zephyr 4583



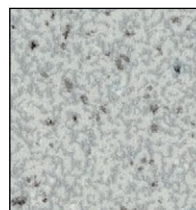
Tungsten EV 4801



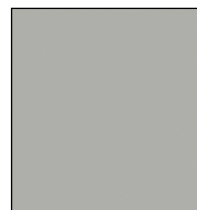
Taupe 9096



Siler Gray 3000



Folkstone Celesta  
3300



Dove Gray 3010



Graphite Grafix  
3020



\*Washed Knotty  
Ash 9438



\*Burnt Strand  
5107



\*Weathered Ash  
9842

Actual colors may vary slightly from those shown due to limitations in the printing process. Colors subject to change without notice.

